

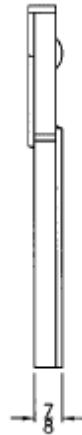
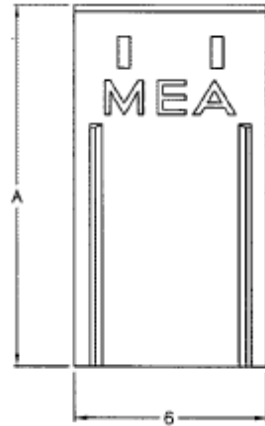
1-877-903-7246



www.trenchdrainsupply.com

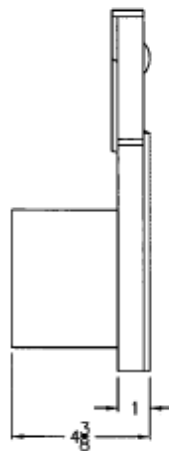
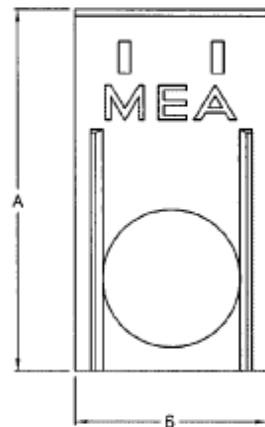
Number	Series
151471	CPS504 End Cap w/ Galvanized Steel Edge

POLYMER CONCRETE SOLID END CAP  
FOR START AND END OF CHANNEL




TYPE	PART NUMBER	A
1000.SE	151471	9-3/8
1030.SE	151472	11-3/8

POLYMER CONCRETE END CAP  
FOR CHANNEL END WITH  $\phi$  4-5/16" PIPE CONNECTOR



TYPE	PART NUMBER	A
1000.E	151473	5-3/4
1005.E	151475	6-3/4
1010.E	151477	7-3/4
1015.E	151479	8-3/4
1020.E	151481	9-3/4

Manufacturer	Specification
 Quality engineered trench drain system	MEADRAIN J1000 POLYMER CONCRETE END CAP WITH GALVANIZED STEEL EDGE, SOLID OR WITH PIPE CONNECTION. SUPPLIED BY TRENCH DRAIN SUPPLY.

DISCLAIMER - The customer and the customer's architects, engineers, consultants, and other professionals are completely responsible for the selection installation and maintenance of any product purchased from Trench Drain Supply and/or its manufacturers. TRENCH DRAIN SUPPLY MAKES NO WARRANTY, EXPRESS OR IMPLIED, AS TO THE SUITABILITY, DESIGN, MERCHANTABILITY, OR FITNESS OF THE PRODUCT FOR CUSTOMERS APPLICATION. The drawing and information provided remain the property and copyright of the manufacturer listed. The manufacturer reserves the right to modify specification without notice.